



Date: July 1, 2024

Preparedness Levels & Alaska Fire Activity

Alaska	5
National	3

Moderate Initial Attack Activity
New Fires and Acres: 17 fires for 757 acres

There are currently 21 staffed fires with 786 personnel. Yesterday's large fire growth was ~102,505 acres.

Alaska moved to PL5 yesterday (6/30) @ 2000

#209(GAD): AA-201, FB-222/223.

#312(MSS): ASM-K7, S-261/263.

#317(UYD): Rolled J-90 w/ 12 SMKJs, no action taken.

#330(UYD): AA-0AX, FB-246/247, J-90 W/ 10 SMKJs responded.

#318(TAD): ASM-K7, ASM-K9, Lead-A4, AA-0AK, T-542, T-544, FB-208/209/218/219, S-261/263/285/286, J-90 w/ 12 SMKJs, and a pounder load of 10 jumpers all responded to this incident.

#319(TAD): AA-201 responded for a size-up.

Prioritized Incident Details

Top 12 Alaska Priority Summary Based on Most Recent 209's																				
New and emerging initial attack within Alaska is #1																				
Priority	Unit	Seq. #	Incident	Descriptive Location	Size in Acres	Yesterday's Acres	Change Since Last 209	% Contained/Completed	Expected Contain/Complete Date	Suppression Strategy	Complexity (Incident Management Organization)	IC	Total Personnel	Crews Assigned			Helicopters Assigned			
														T-1	T2	T2IA	T-1	T-2	T-3	
1	AKDNS	900	Grapefruit Complex	30 miles NE of Fairbanks on both sides of Highway 2.	40,857.0	40,849.0	8.0	0%	10/30	1/0	Type 5 Incident	AK-TAD Duty Officer AK-UYD Duty Officer	140	5	1					
2	AKKAR	300	Lookout	0	9.0	9.0	-	0%	1/0	Full Suppression	Type 4 Incident	0	0							
2	AKDNS	301	Fickett	0	40.0	40.0	-	0%	1/0	Full Suppression	Type 4 Incident	0	0							
3	AKDNS	312	Montana Creek	0	150.0		150.0	0%	1/0	Full Suppression	Type 3 Incident	0	0	1	1	1				
4	AKTKCN	169	Portage	1 mile south of Georgetown, AK.	823.4	823.4	-	39%	8/1	Point Zone Protection	Type 3 Incident	B.Quimby ICT3	34							
4	AKDNS	252	Deception Pup	3 miles northwest of Central, Alaska	121.0	123.0	(2.0)	75%	10/1	Full Suppression	Type 5 Incident	Julia Lauch ICT3 and Nolin Page ICT3t	78	1	1				1	
5	AKFWQ	119	McDonald	9 miles southwest of Salcha	122,362.0	104,544.9	17,817.1	0%	10/1	Point Zone Protection	1/0	IC Kudo IC-T Schumacher	0	4					2	
6	AKDNS	276	Gold King Creek	38 miles ESE of Anderson	5,500.0	2,803.5	2,696.5	0%	7/10	Point Zone Protection	Type 3 Incident	Stark, Jeffery	34		3					
7	AKDNS	213	Deep	9 Miles S of Lake Minchumina	13,222.0	6,058.0	7,164.0	35%	9/28	Point Zone Protection	Type 3 Incident	Rishavy	68		4				2	2
8	AKSWR	209	Naluk	16 Miles SE of Kiana	1,200.0	1,200.0	-	0%	10/1	Point Zone Protection	Type 3 Incident	E. Butterfield ICT4 Alaska Fire Service	24						1	
12	AKKAP	143	American Creek	25 miles northeast from King Salmon	4,650.5	4,650.5	-	33%	9/30	Monitor	1/0	Torrey Short	8						1	
IA	AKDEP	318	Riley	1 mile north of Denali National Park entrance.	300.0		300.0	1%	7/31	Full Suppression	1/0	AK-TAD Duty Officer	20							

Source: AMAC Incident Prioritization List, ICS-209s

Resources

Aviation within Alaska	Total
Air Tactical	4
ASM	2
BirdDog	1
Lats	3
FireBosses	8
Scoopers	4
SMKJ	5
Utility AC	7
Helicopter, Type 1	1
Helicopter, Type 2	8
Helicopter, Type 3	9
Total Aircraft	52

Crews Committed within Alaska	Total
Type2IA	5
Type 1	12
Type 2	8
Type 1 Module	
Type 2 Module	2
Suppression Module	2
Total Crews	29

Incident Mangement Teams in Alaska	Total
CIMT	1
IMT 1	
IMT 2	
IMT 3	2
Total IMTs	3

AVIATION

-Resources remain prepositioned at FYU/GAL/PAQ due to smoke.

-J-09 arrived today, will be in the line-up tomorrow.

- AA-0SG remains O/S.

AIRSPACE/TFRs

#900 Grapefruit Complex (UYD/TAD): 4/5782 - **NEW**

#312 Montana Creek (MSS): 4/5688- **NEW**

#318 Riley (TAD): 4/5821- **NEW**

#119 McDonald (MID): **TBD**

SMOKEJUMPER

Anticipated smokejumpers available: ~ 2 loads – 1 PAQ, 1 FBK
~ 96 SMKJ's committed

Smokejumper Demobilizations

Yesterday: #276(FAS): 6; #300(TAD): 10; #252/#259(UYD): 13; #312(MSS): 12

Planned for today: #222(GAD)/#223(GAD): 5; #301 (TAD): 8

CREWS

- 5 AK contract crews committed and 4 available GACC
- Pioneer Peak available today 7/1
- Midnight Sun IHC traveling tomorrow, available Friday 7/5
- Chena IHA available 7/6

NICC JET MOVEMENT

Jet Mobilizations:

Jet #1 – Arrived 6/25 all Crews on incident

Jet #2 – Arrived 6/26, all Crews on incident

Jet #3 – Arrived 6/29 – all Crews mobilized to their respective incidents

Jet #4 – Mobilizing today 7/1, 4 IHCs filled

Jet #5 – order placed, mobilizing 7/3

OVERHEAD/TEAMS

- 100 pending overhead requests
- AK CIMT2 ordered for #318(TAD) Riley
- CIMT - AK Team 3 assigned to assigned to Globe #253(UYD). Also managing the Grapefruit Complex #900(UYD)
- IMT3 – WY Team 3 assigned to Montana Creek Fire #312(MSS)
- IMT3 – ID Team 1 assigned to Central Group - Deception Pup #252(UYD) and Flasco #259(UYD)
- AK CIMTs available GACC only

Source: IROC Reports, [National Smokejumper Status Report](#), AK Incident Aircraft Tracking Spreadsheet & AICC Documentation, 2024 IMT Tracking Report

Weather Summary

Strong high pressure over mainland Alaska will persist for a couple more days, then start to break down rather quickly. Temperatures five to ten degrees above normal are forecast across much of mainland Alaska again today, with RH values into the low 20s.

There is a chance for isolated showers and thunderstorms across much of the Interior today, but with a lot more activity near the ALCAN border in Fortymile Country.

Southern Alaska will see increasing moisture over the next two days as a low pressure system puts easterly flow aloft to feed spotty showers, leaving many dry areas, particularly on the west sides of terrain features due to downsloping. The Mat-Su Valley, Anchorage Bowl, and western Kenai area likely to stay fairly dry.

High pressure will get squeezed out the middle of next week and shunted to the south. This sets up a tight pressure gradient over northern Alaska as an Arctic low approaches the northwest coast. These westerly winds may make for some significant fire weather concerns on Tuesday and Wednesday, bringing near red flag conditions to the northern Interior. Wetting rains will follow these winds but will take some time to work across the state, leaving the northeast Interior vulnerable to rapid fire spread beginning Tuesday.

Source: Alaska 7-Day Outlook

Fuels/Fire Potential

Very High and Extreme Fine Fuel Moisture Codes (FFMC) across the state means that surface fuels are receptive to ignitions, both human and natural. Today, Initial Spread Indices are on the rise to Very High to Extreme across much of the mainland. Those numbers continue to increase for the next few days.

Spruce Adjective Rating keys in on the Yukon Flats, Middle Tanana Valley and Southern Tanana Zone as areas of Extreme potential today.

The Yukon Flats continue to have the highest indices throughout all of the burnable fuel column, with Duff Moisture Codes and Buildup Indices showing Very High and Extreme. With lightning in the forecast continuing there for a few more days, ignitions and rapid spread are likely.

Rains expected late in the week will bring big changes to these fuel conditions, moderating the fine fuels and upper duff very quickly.

Source: Alaska 7-Day Outlook

No Red Flag Warnings or Fire Weather Watches

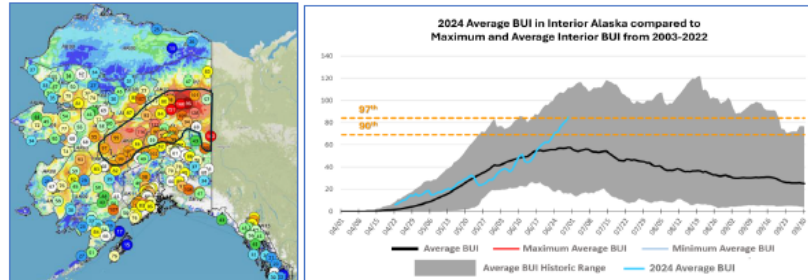
Fuels and Fire Behavior Advisory Central to Northeast Interior Alaska

Valid: June 29 – July 12, 2024

Subject: Exceptional landscape flammability and widespread ongoing large fire growth.

Discussion: The Buildup Index (BUI) is the best indicator of seasonal severity and overall flammability of fuels in Alaska. It represents deeper drying in the duff layers and greater fuel availability. Large fire growth generally occurs from mid-June to mid-July surrounding the summer solstice when long days and rapid drying can produce elevated BUIs. Southwest Alaska normally experiences shorter periods of high flammability due to marine influences but has had numerous fires burning since the middle of June across a wide swath of the state. The area of most significant fire growth is occurring from the southern central Interior, through the northeast Interior to the Canadian border. Hot weather and a dry air mass has put BUIs at near-record levels.

Difference from normal conditions: The attached graph shows the current 2024 BUI trend for the Interior of Alaska compared to other busy fire seasons. 2024 has been above average BUI since May 31, and higher than 2019 levels for the same period. Convective precipitation has moderated values in some areas but forecast high pressure will rapidly increase values. Much of the landscape has experienced large fire growth earlier than usual. Multiple days of wetting rain adding up to more than one inch will be needed for lasting relief.



Concerns to Firefighters and the Public:

- Spruce stands are extremely flammable, will ignite readily, exhibit rates of spread more than one mile per hour, torch, and spot prolifically up to ¼ mile or more, and exhibit intense crown fire behavior.
- Temperatures above 80 degrees and RH below 30% are important thresholds for rapid spread and crown fire behavior. Strong winds are not required for large fire growth.
- Long-term drying has stressed green fuels and is encouraging spread into riparian areas and less flammable hardwood forests. These fuel types may no longer be barriers to fire spread.

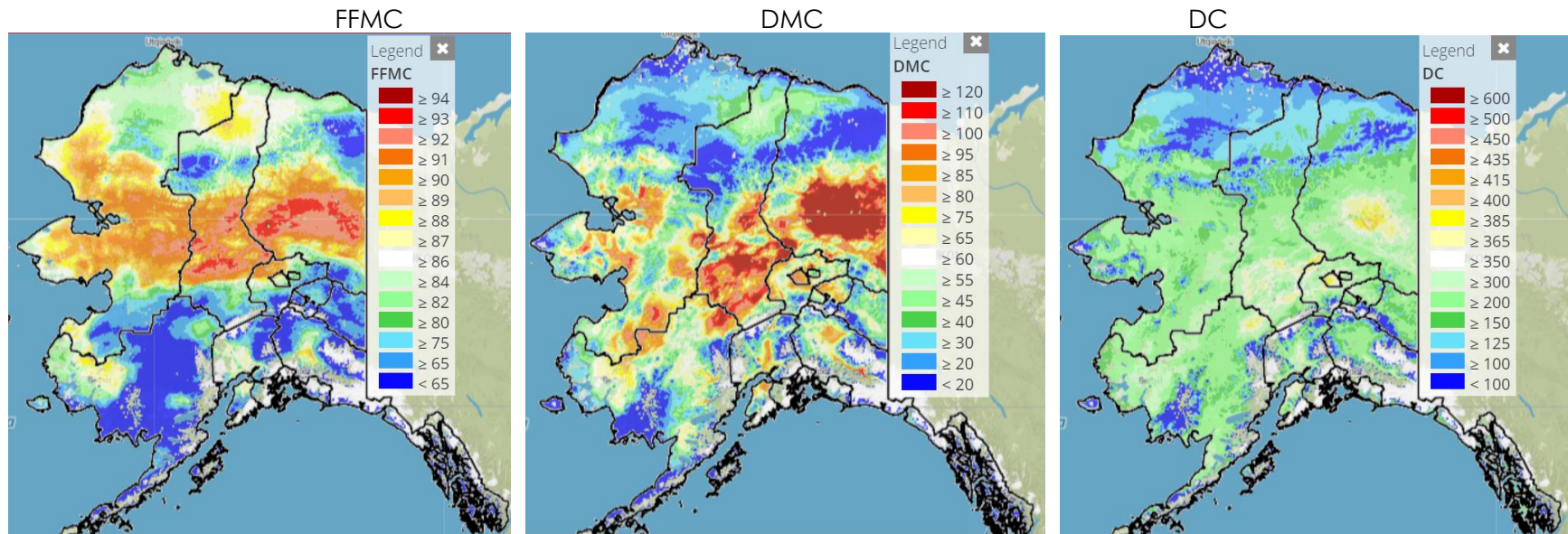
Mitigation Measures:

- Ensure that you can recognize hazardous fuel types including tundra that is exceptionally dry.
- Understand the triggers and thresholds for problem fire behavior.
- Monitor forecasts and indices to anticipate areas of increased flammability and extreme fire behavior.
- Maintain clear communications when working around active fires.

Area of Concern: Southern central to northeastern Interior to the ALCAN border

Issued By: Alaska Interagency Coordination Center Predictive Services

Click on the following images for direct links to the maps.



For additional fuels information visit <https://akff.mesowest.org/>

Sources: AICC Predictive Services – Fuels/Fire Danger web page, Alaska Fire & Fuels web page

The Coffee Brief is posted at PLs 4 and 5 only.

